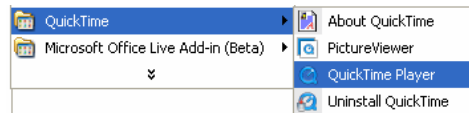




Quick Time Player Version 7.4

These instructions will help with TIF images from LandAccess.com. Quick time will take over TIF file viewing.

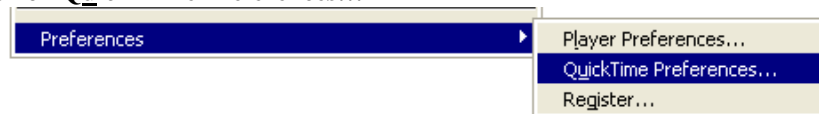
Open Quick Time Player



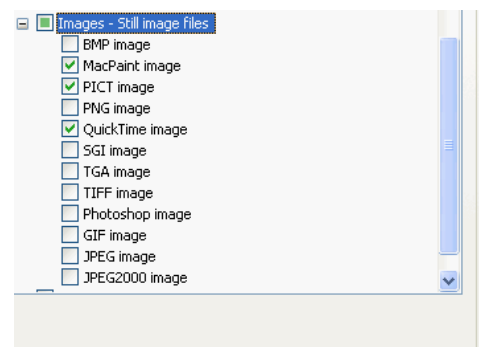
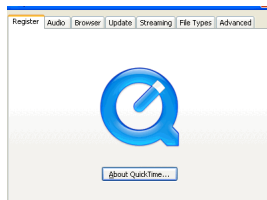
Select **E**dit from the tool bar



Roll mouse to Preferences, click on **Q**uick Time Preferences...



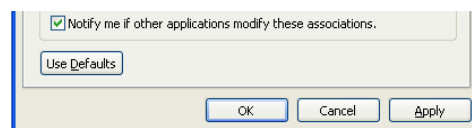
From the Tabs at the top of this window select **F**ile Types



Click on the + next to Images – Still Image Files to expand file list

Click in check box next to TIFF image until the box is empty

Click OK or Apply, (if you click Apply you will have to click OK to close that window)



You can close Quick Time Player and re-open your web browser

Navigate to www.LandAccess.com and begin your search again